

SOLHAUS

APARTMENTS + TOWER

Find **Your** Way,
Find **Your** Home

Located Minutes from the
University of Minnesota Campus



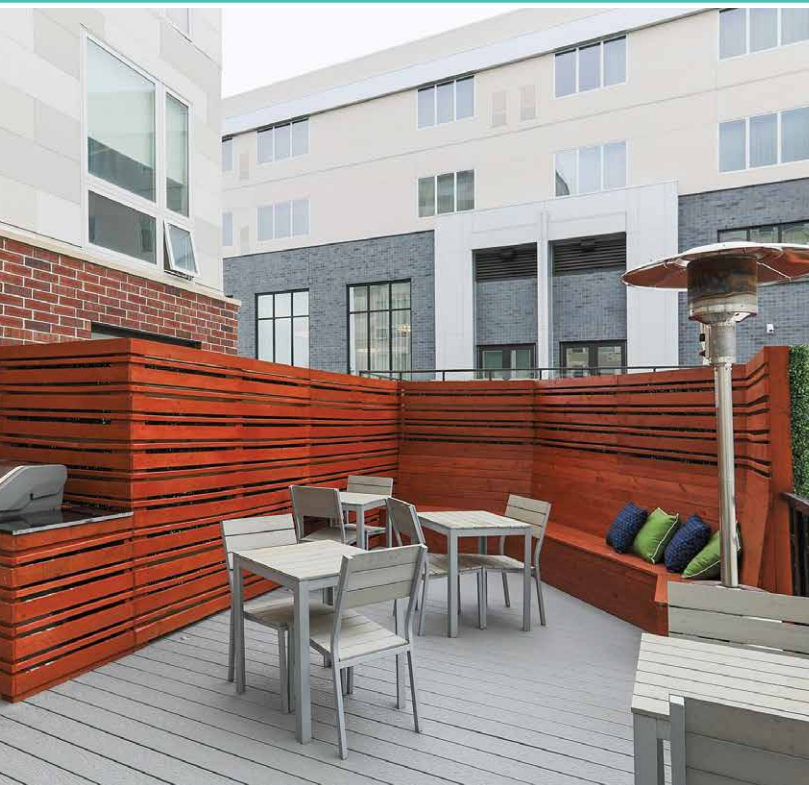
Community Features

- Rooftop Lounge
- HOURCAR Car Rental
- Study Lounge with Print Station
- Pet Friendly
- Bark Park
- 24-Hour Fitness Center
- Metro Transit Access
- Planned Resident Events
- Indoor Bike Storage
- Parcel Pending Locker System

Apartment Features

- Open Floor Plans
- Electronic Key Entry
- Nest Thermostat
- Full-Size Stackable Washer/Dryer Included
- Granite Countertops
- Heated Garage Parking
- Stainless-Steel Appliance Package
- Gourmet Kitchen with Shaker-Style Cabinets
- Subway Tile Backsplash
- LED Lighting

*Select apartments



With one foot in Minneapolis and the other on the border of Saint Paul, Solhaus Apartments and Tower offer you the best of both worlds! Our chic, modern design embraces the latest in eco-friendly features and energy efficiency. Choose from our large selection of unique floor plans with your choice of studio, one-, or two-bedroom options, and find the layout that is perfect for you! Each floor plan is pet friendly as well, so you won't have to worry about leaving your pets behind! When you choose to call our community home, you'll gain access to the best features and amenities, from the convenience of free internet and available online payments, to fully equipped kitchens with granite countertops! You'll find everything you need is accessible and likely within walking distance. The TCF Bank Stadium is only two blocks away from our community, so you can cheer on the Gophers without the hassle of finding parking, and we are only a 15-minute light-rail ride from any point on the University of Minnesota Campus. You'll enjoy the excitement of the University setting, yet still enjoy quiet and peaceful moments at home when you need to catch up on last-minute studying or other work.



Rentsparency™

Know Before You Rent



2428 Delaware Street SE
 Minneapolis, MN 55414
612.568.1512
solhausmpls.com



With RENTsparency, you can rent online with confidence. With websites developed to provide comprehensive rental and community information, you will be fully informed about community pet policies, amenity information, lease terms, rental criteria, monthly payments, and real-time availability. Our streamlined online leasing process allows you to research and choose a floor plan, select a unit and secure a move-in date, complete an application and sign a lease — from any device, anywhere, at any time.

That's RENTsparency