



Find **Your** Way,  
Find **Your** Home

Located Minutes from  
Military Bases



### Community Features

- Convenient Location
- Heated Indoor Pool
- TV Lounge
- iMac Work Stations
- Fitness Center
- Pet Friendly
- Playground
- Sundeck
- Parcel Packge Lockers

### Apartment Features

- Energy Star® Stainless-Steel Appliances
- Individual Climate Control
- Full-Size Washer/Dryer
- Cable/Satellite
- Private Patio/Balcony
- Ceiling Fan
- Vaulted Ceilings
- Large Closets\*
- Wood-Burning Fireplace\*

\*Select apartments

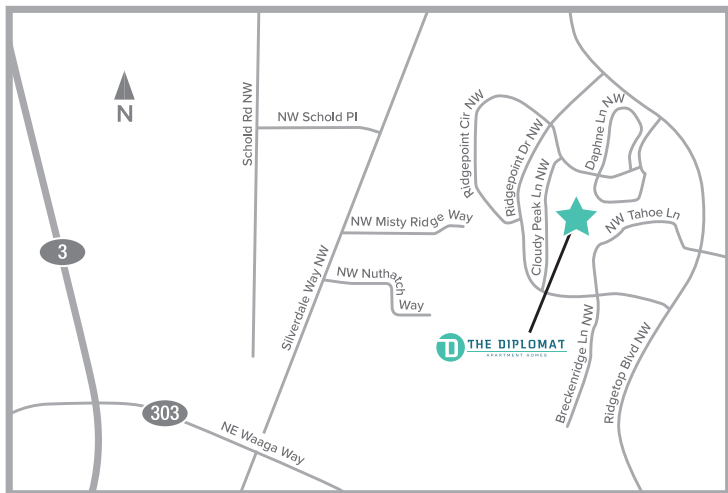
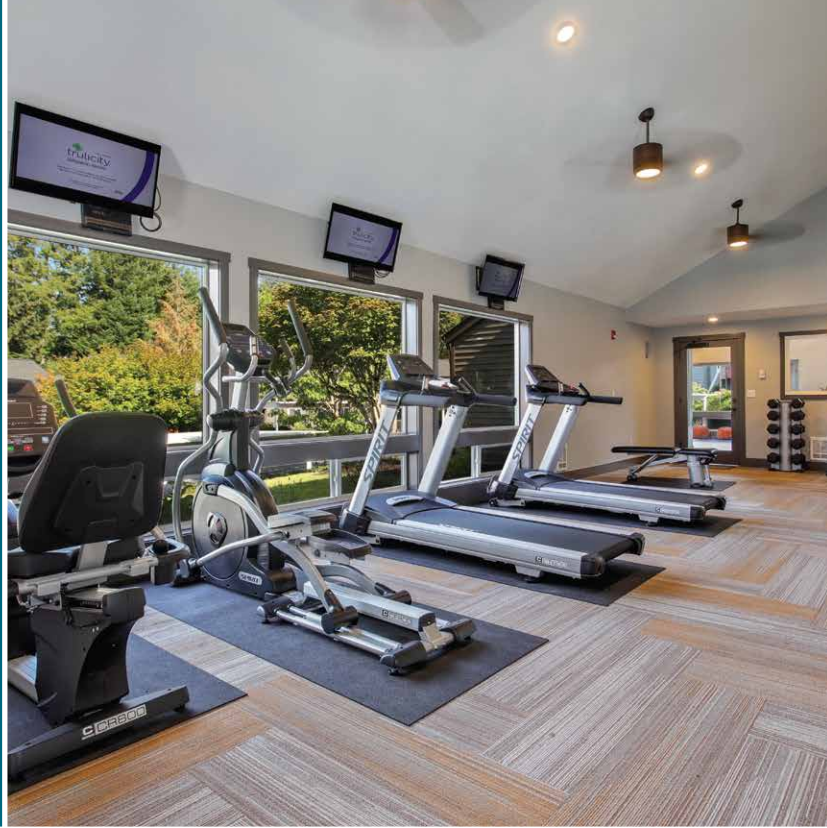


The Diplomat is conveniently located in the highly rated Central Kitsap School District, only moments away from many of the area's most desirable destinations such as waterfront parks, shopping and dining options, and entertainment.

The community includes picturesque tree-lined streets for afternoon and evening walks as well as spectacular mountain and greenbelt views.

Each of our apartment homes offer a full-size washer and dryer, spacious patios/balconies, a full appliance package, and much more!

Amenities include a fabulous heated, Indoor pool and spa. Keep up your figure in our exercise room, or enjoy the evening with a barbecue on the sundeck.



# Rentsparency™

## Know Before You Rent

With RENTsparency, you can rent online with confidence. With websites developed to provide comprehensive rental and community information, you will be fully informed about community pet policies, amenity information, lease terms, rental criteria, monthly payments, and real-time availability. Our streamlined online leasing process allows you to research and choose a floor plan, select a unit and secure a move-in date, complete an application and sign a lease — from any device, anywhere, at any time.

That's RENTsparency



12188 Cloudy Peak Lane NW  
Silverdale, WA 98383

**360.395.2699**

[liveatthediplomatwa.com](http://liveatthediplomatwa.com)

