



# dwELL APARTMENTS

LUXURY APARTMENTS

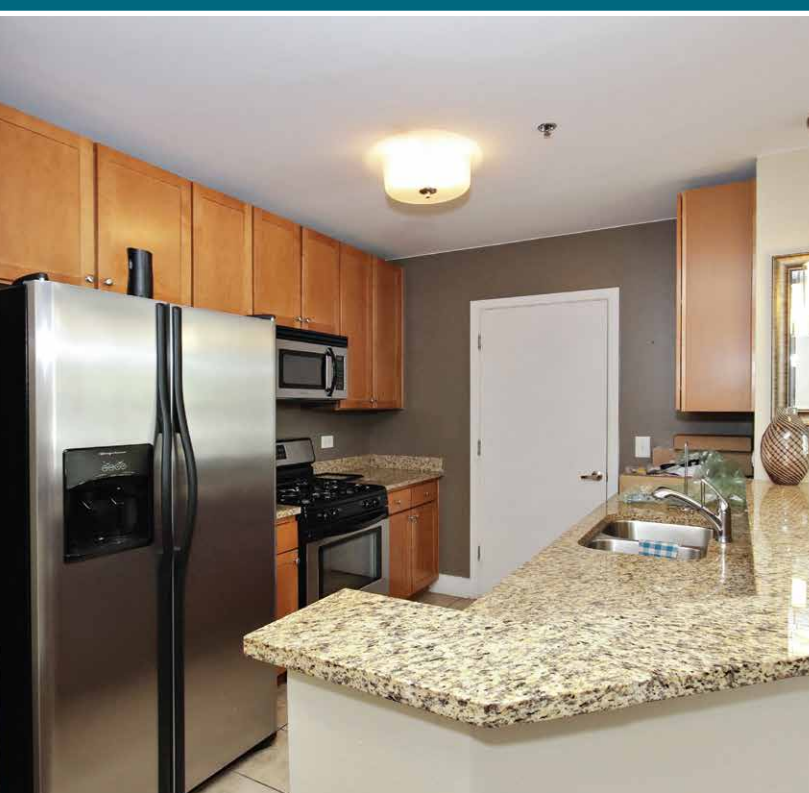
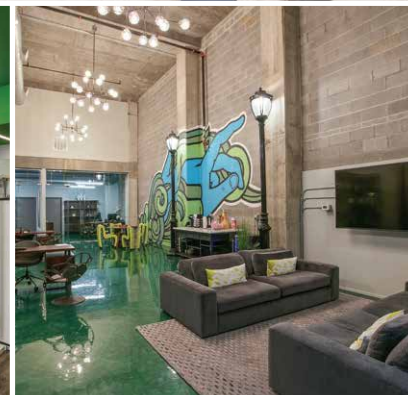
A Student Space for  
your Social Life

Located Minutes from  
Georgia State University



## Community Features

- Study Room
- Sparkling Pool
- Roommate Matching
- Pet Friendly
- Rooftop Lounge
- Renovated 24-Hour Fitness Center  
with Free Weights
- Tennis Courts
- Package Receiving
- Courtyard



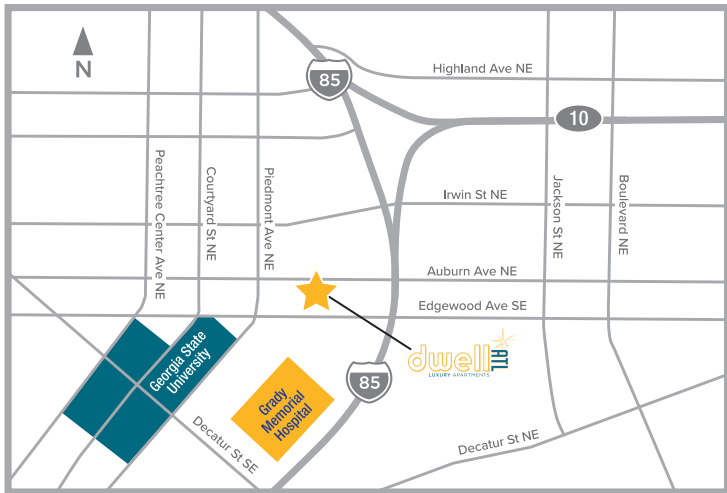
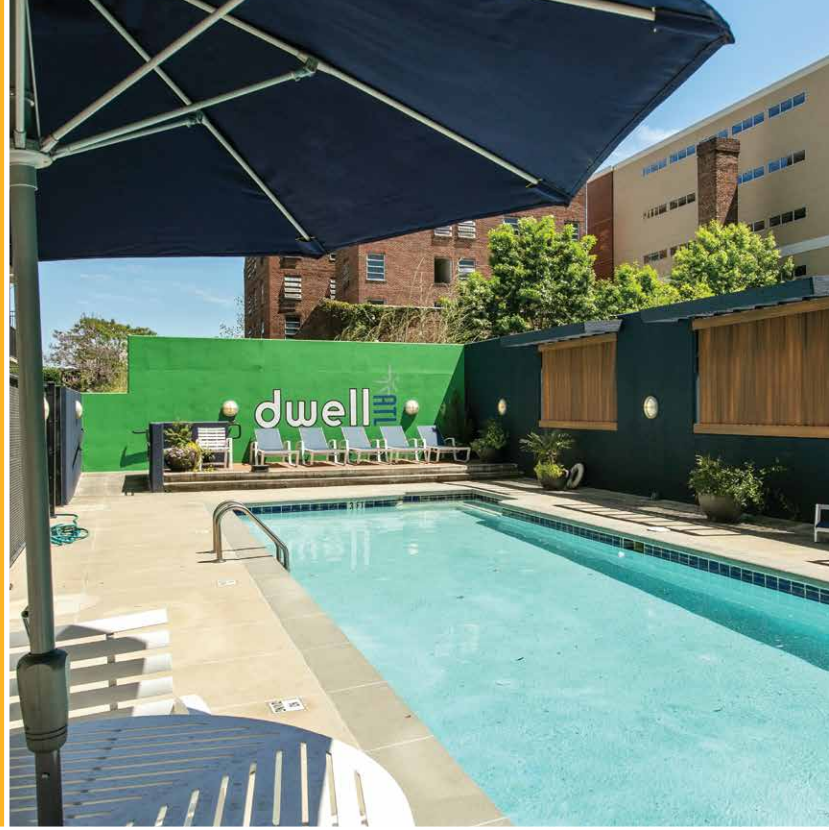
## Apartment Features

- Renovated Interiors
- Stainless-Steel Appliances
- Individual Climate Control
- Washer/Dryer Hookup\*
- Additional Storage
- Private Patio/Balcony\*
- 24-Hour Emergency Maintenance
- Controlled Entry Access
- Hardwood Floors
- Window Coverings

\*Select apartments



Reimagine your life when you make your home at Dwell ATL, downtown Atlanta's luxury student apartment community. Focusing on the urban lifestyle, Dwell ATL offers one- and two-bedroom apartments featuring renovated interiors with stainless-steel appliances and upgraded exterior spaces. You can even take advantage of our expansive two bedroom penthouse floor plan option. While each floor plan may have different amenities and features, each home boasts air conditioning, refrigerators, dishwashers, microwaves, and cooking ranges. Some homes even offer a private balcony or patio for your living enjoyment. Dwell ATL invites you to take advantage of our amazing amenities including our brand new resident clubhouse with study lounges, a TV lounge, gym, pool, private parking garage, rooftop tennis court, and sky deck with breathtaking views. Our community is also pet friendly, unlike other student communities we welcome your furry friends.



171 Auburn Avenue NE

Atlanta, GA 30303

404.521.3008

[liveatdwellatl.com](http://liveatdwellatl.com)



# Rentsparency™

## The Social Pledge

There are many choices to make when heading off to college. With The Social Student Spaces, we have your housing choice covered. Make informed decisions with websites developed to provide comprehensive rental and community information, leasing options with individual liability leases, payment plans, and roommate matching services. Our full service online leasing process allows you to choose a floorplan, complete an application and sign a lease well in advance of your secured move-in date. Our student services continue throughout your stay with 24/7 customer service, modern communication portals, resident activities, and community rewards points you can use.

Now That's RENTsparency!