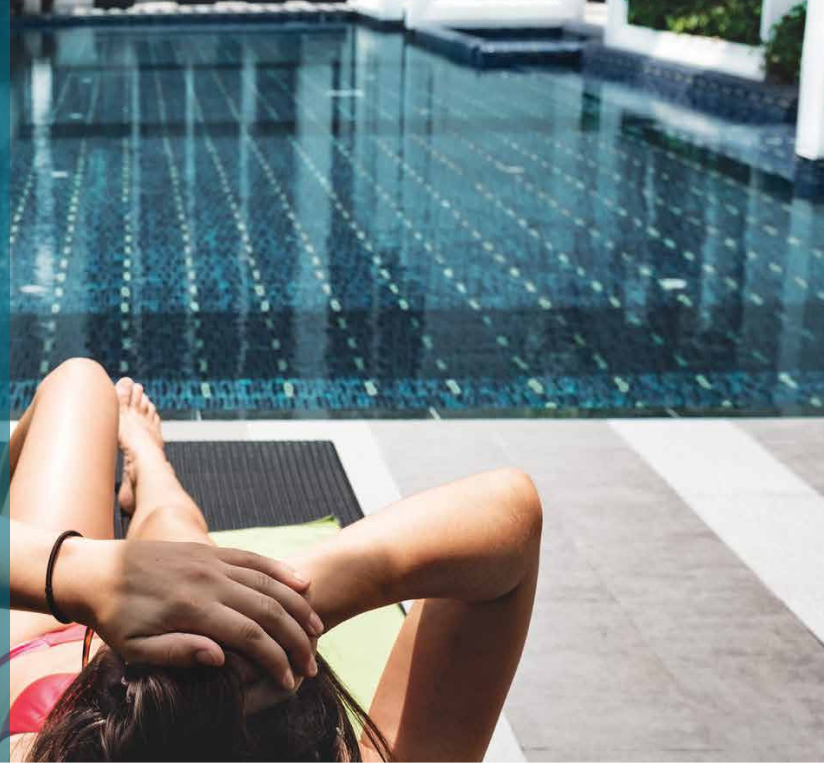


Arrive.

NORTH SCOTTSDALE

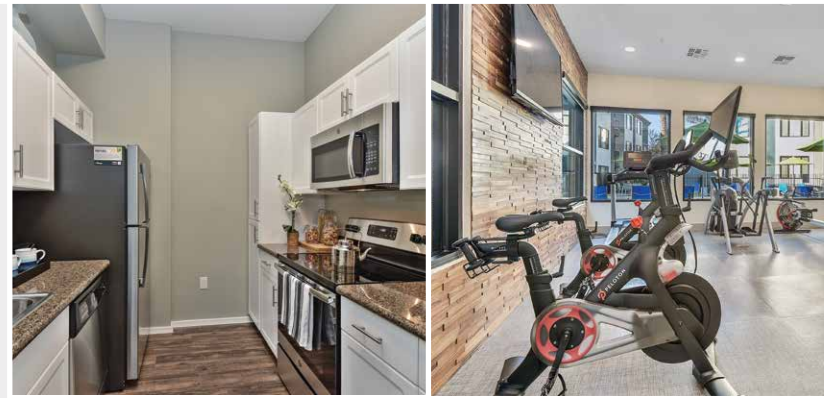
Don't Just Come Home,
Arrive.

Located Minutes from Sonoran
Desert National Monument



Community Features

- Community Clubhouse
- Sparkling Pool
- Outdoor TV Lounge with Grills
- Pet Friendly
- Hiking Trails
- 24/7 Fitness Center, Free Weights Available
- iMac Workstation
- Wi-Fi in Pool Area
- Package Receiving
- Controlled Access



Apartment Features

- Newly Renovated Interiors
- Individual Climate Control
- Washer/Dryer in Every Unit
- Private Patio/Balcony*
- Fireplace*
- Energy Efficient Windows
- Tile Floors
- Large Closets
- Hardwood Floors

*Select apartments



We know your life is unique and that you have certain expectations when it comes to apartment living. At Arrive North Scottsdale find the floor plan that matches your lifestyle; whether you need the open-concept one- and two-bedroom apartments or the spacious three-bedroom plan, you'll be sure to find the layout you need. Plus, you can bring your pets along when you move! We welcome both cats and dogs with only a few restrictions. We have amplified the experience of apartment living by adding the best amenities and features we could to our community. From online rent payments and covered parking to a clubhouse, fitness center, outdoor lounge, and pool and spa, you'll find a new feature around every corner. Finally, it's not the perfect apartment if it isn't in the perfect location. We are the gateway between the rich desert attractions of natural Arizona and the exciting, growing metroplex.



Arrive.
NORTH SCOTTSDALE

17950 N 68th Street
Phoenix, AZ 85054

480.867.6510

arrivenorthscottsdale.com



RentsparencyTM

Know Before You Rent

With RENTsparency, you can rent online with confidence. With websites developed to provide comprehensive rental and community information, you will be fully informed about community pet policies, amenity information, lease terms, rental criteria, monthly payments, and real-time availability. Our streamlined online leasing process allows you to research and choose a floor plan, select a unit and secure a move-in date, complete an application and sign a lease — from any device, anywhere, at any time.

That's RENTsparency